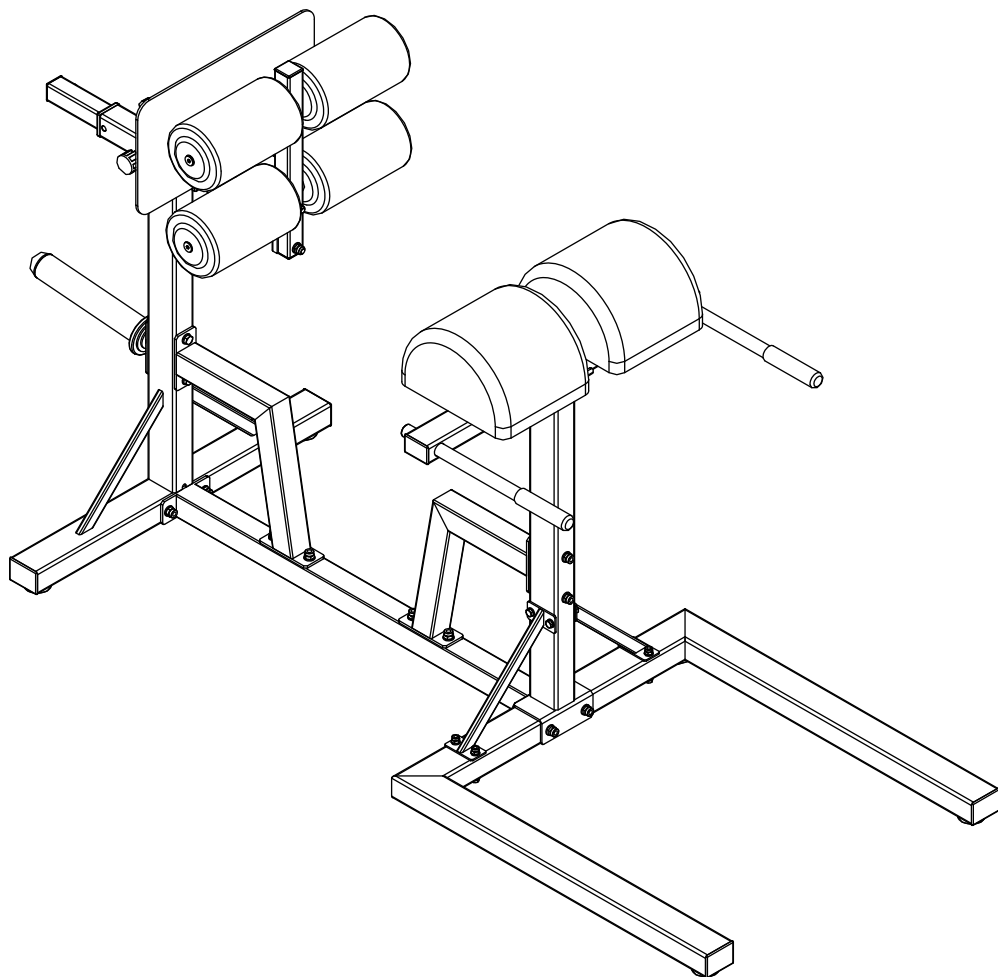




NO  
DOUBTS

SPART



ST2002S

**HYPEREXTENSION BENCH**





# SAFETY PRECAUTION

## Safety First

Regardless of how enthusiastic you may be about getting on your equipment and exercising, take the time to ensure that your safety is not jeopardized. A moment's lack of attention can result in an accident, as can failure to observe certain simple safety precautions.

1. Assemble the equipment according to the assembly instructions and only use the individual parts enclosed for assembly of the equipment and which are listed in the parts list as being specifically for this equipment. Before you start assembly, check against the delivery to make sure that everything has been delivered and check against the packing list to make sure all parts have been enclosed.
2. Read, study and understand the Owner's Manual and all the warning labels on this product. Furthermore, it is recommended to familiarize yourself and others with the proper operation and workout recommendations for this product prior to use. Some of this information can be obtained in this owner's Manual, as well as from your local retailer.
3. It is imperative that you retain this Owner's Manual and be sure all warning labels are legible and intact. Replacements Owner's Manual and labels are available from your local retailer.
4. It is recommended that another person assist you with the assembly of this unit.
5. Consult with your physician before beginning any exercise program. It is recommended that you undergo a complete physical examination.
6. Use proper discretion when children are present.
7. Frayed or worn cables can be dangerous and may cause injury. Periodically check these cables for any indication of wear.
8. Keep hands, limbs, loose clothing and long hair well out of the way of moving parts.
9. Do not attempt to lift more weight than you can control safely.
10. Work within your recommended exercise level. DO NOT work to exhaustion. If you feel any pain or discomfort, stop your workout immediately.
11. Inspect the machine for any sign of wear on parts, hardware becoming loose or cracks on welds. If a problem is found do not use or allow the machine to be used until the defective part is repaired or replaced.
12. DO NOT place any sharp objects around the machine.



NO  
DOUBTS

# ASSEMBLY INSTRUCTION

## I . Notice of assembly

- \* An enough dimension will be required to assemble and properly use the machine.
- \* Please use floor padding, such as cardboard, to avoid scratching your floor during assembly.
- \* The nuts and bolts have a little grease on them to protect them from corrosion. Please keep a rag handy to wipe your hands.
- \* All plastic end caps and plugs have been assembled on the unit prior to shipment. They are shown on the assembly drawings for reference in the event replacement parts are needed.
- \* The machine uses several different lengths of bolts. Be careful to use the correct length of bolt called for at each step of assembly.
- \* Do not touch the wires and cables attention when drilling.

## II . Before you begin

Locate a comfortable work site. Assemble your machine in an open space with ventilation and lighting, and with the help of other person. The machine posses a large area, so you do not place it in living room.

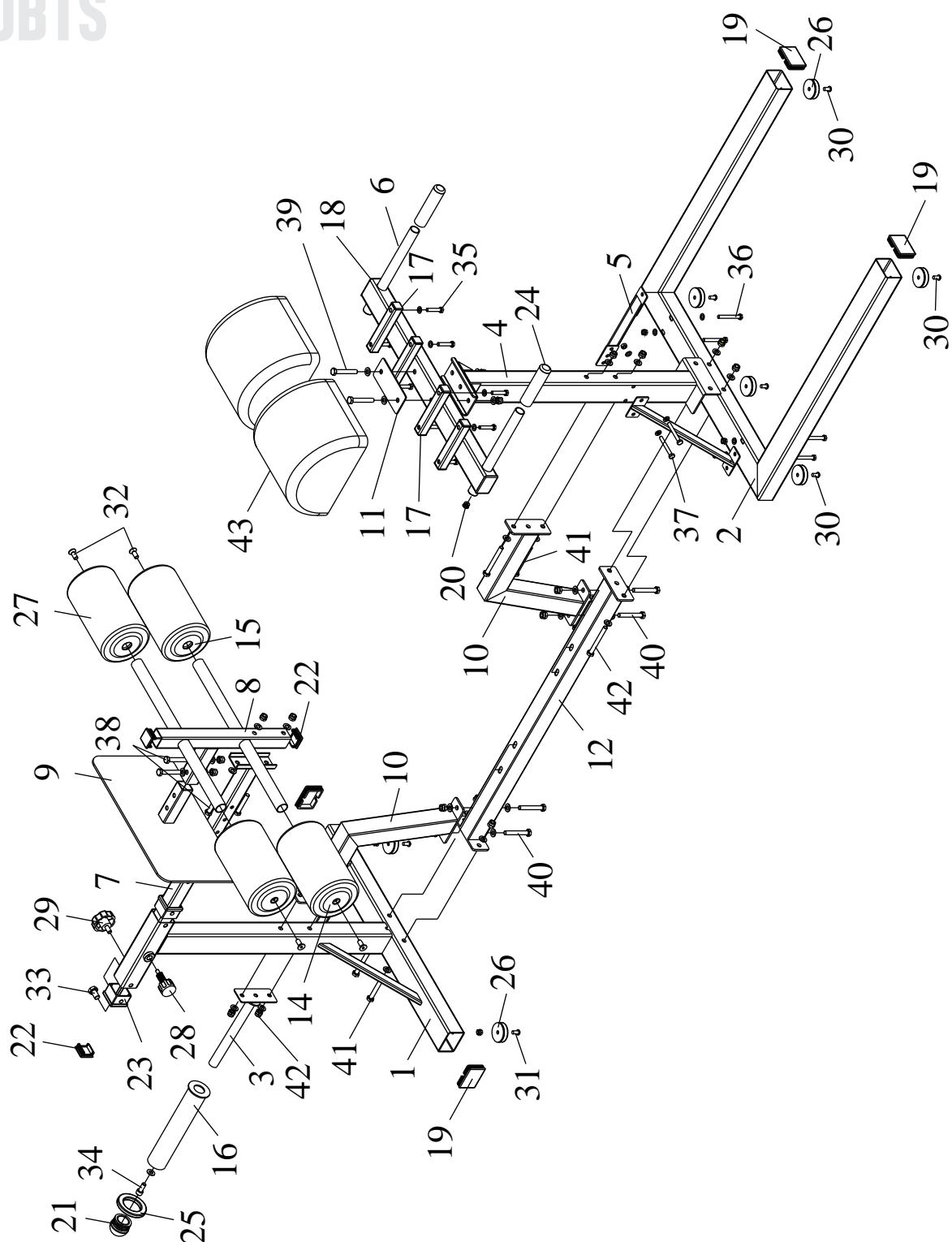
Find your tools. You will need the following tools to assemble your machine.

- . Standard screwdriver
- . WD40 lubricant or Vaseline (if necessary)

Review all safety guideline on Page 2 of this manual.

## III . Assembling your machine

# EXPLODED DRAWING





NO  
DOUBTS

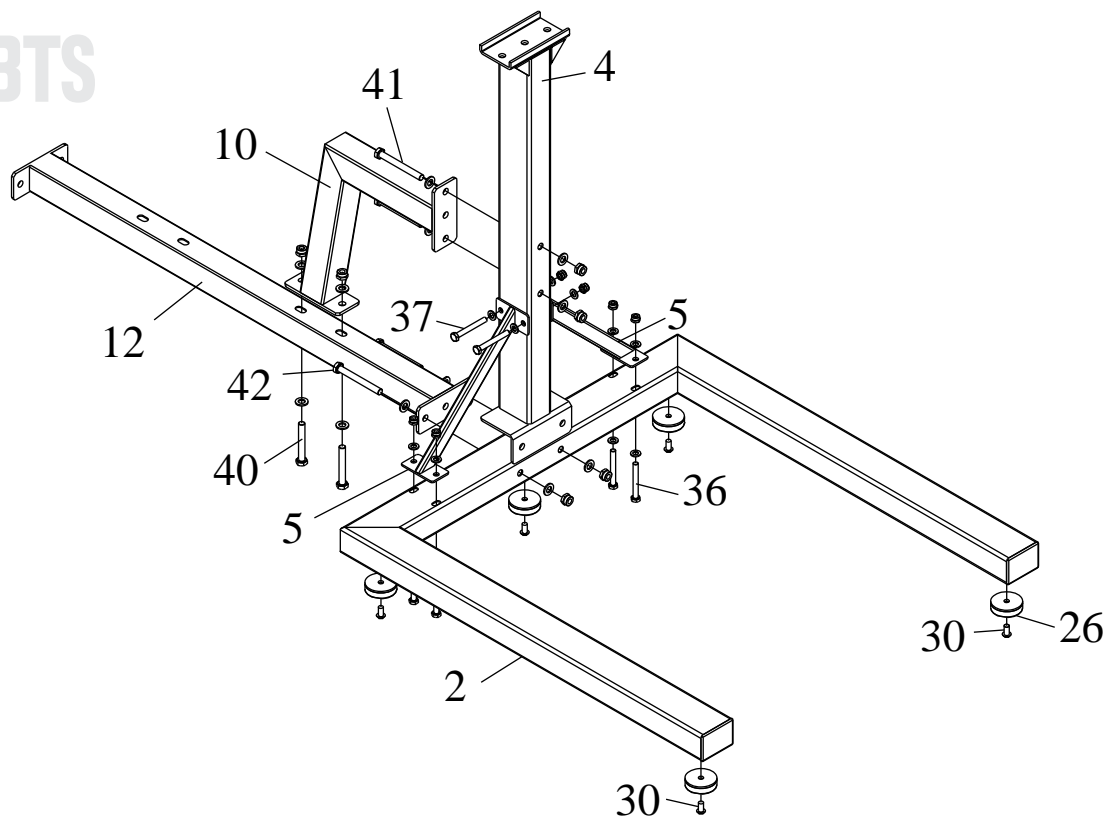
## PART LIST

NUMBER	DESCRIPTION	QUANTITY
1	REAR SUPPORT	1
2	BASE FRAME	1
3	PLATE BAR	1
4	UPRIGHT SUPPORT	1
5	OBLIQUE SUPPORT	2
6	BACK CUSHION SUPPORT	1
7	ADJUSTABLE TUBE	1
8	FOAM TUBE SUPPORT	1
9	FOOT PLATE	1
10	CONNECTION	2
11	CONNECTION PLATE	1
12	CONNECTION TUBE	1
14	COVER (OUTSIDE)	4
15	COVER (INSIDE)	4
16	OP BAR	1
17	SQUARE PLUG (SMALL)	8
18	RECTANGLE PLUG	2
19	RECTANGLE PLUG (BIG)	4
20	ROUND PLUG	2
21	ROUND PLUG - 50	1
22	SQUARE PLUG	3
23	SQUARE BUSHING	2
24	HANDLE	2
25	RUBBER BUFFER	1
26	BUFFER	7
27	FOAM (WITH COVER)	4
28	FAST PIN	1
29	LOCKING KNOB (MALE)	1
30	ALLEN HEAD BOLT M8×16	5
31	ALLEN HEAD BOLT M8×16 + LOCK NUT	2
32	HEX SOCKET HEAD SCREWS M8×30	4
33	HEXAGON SOCKET CAP BOLT M10*16	1
34	HEXAGON SOCKET CAP BOLT M10*25 + WASHER 10	1
35	BOLT M8×50 + WASHER	8
36	BOLT M8×65 + TWO WASHERS + LOCK NUT	4
37	BOLT M8×70 + TWO WASHERS + LOCK NUT	2
38	BOLT M10×55 + TWO WASHERS + LOCK NUT	4
39	BOLT M10×60 + TWO WASHERS + LOCK NUT	2
40	BOLT M10×70 + TWO WASHERS + LOCK NUT	4
41	BOLT M10×90 + TWO WASHERS + LOCK NUT	4
42	BOLT M10×95 + TWO WASHERS + LOCK NUT	4
43	BACK CUSHION	2



## STEP 01

NO  
DOUBTS

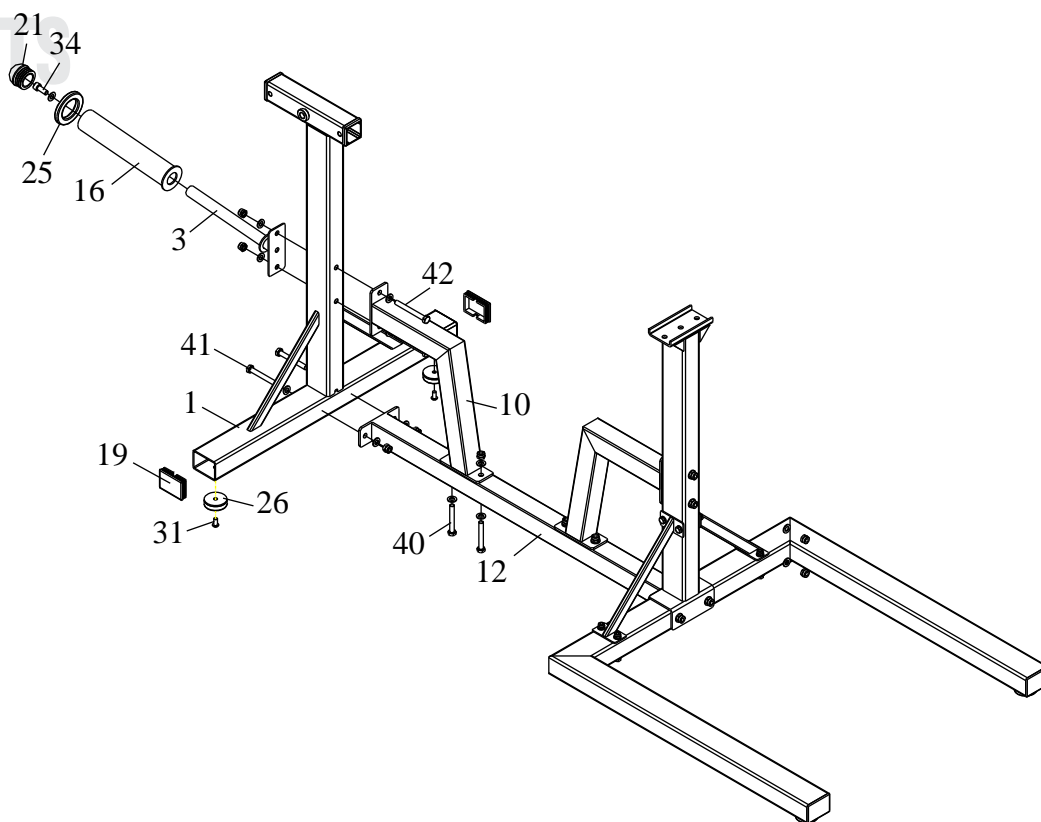


1. Attach five parts 26 to part 2 with five parts 30.
2. Attach part 4 and part 12 to part 2 with two parts 42.
3. Attach part 10 to part 4 and part 12 with two parts 41 and two parts 40.
4. Attach parts 5 to part 2 with four parts 36.
5. Attach parts 5 to part 4 with two parts 37.



## STEP02

NO  
DOUBT



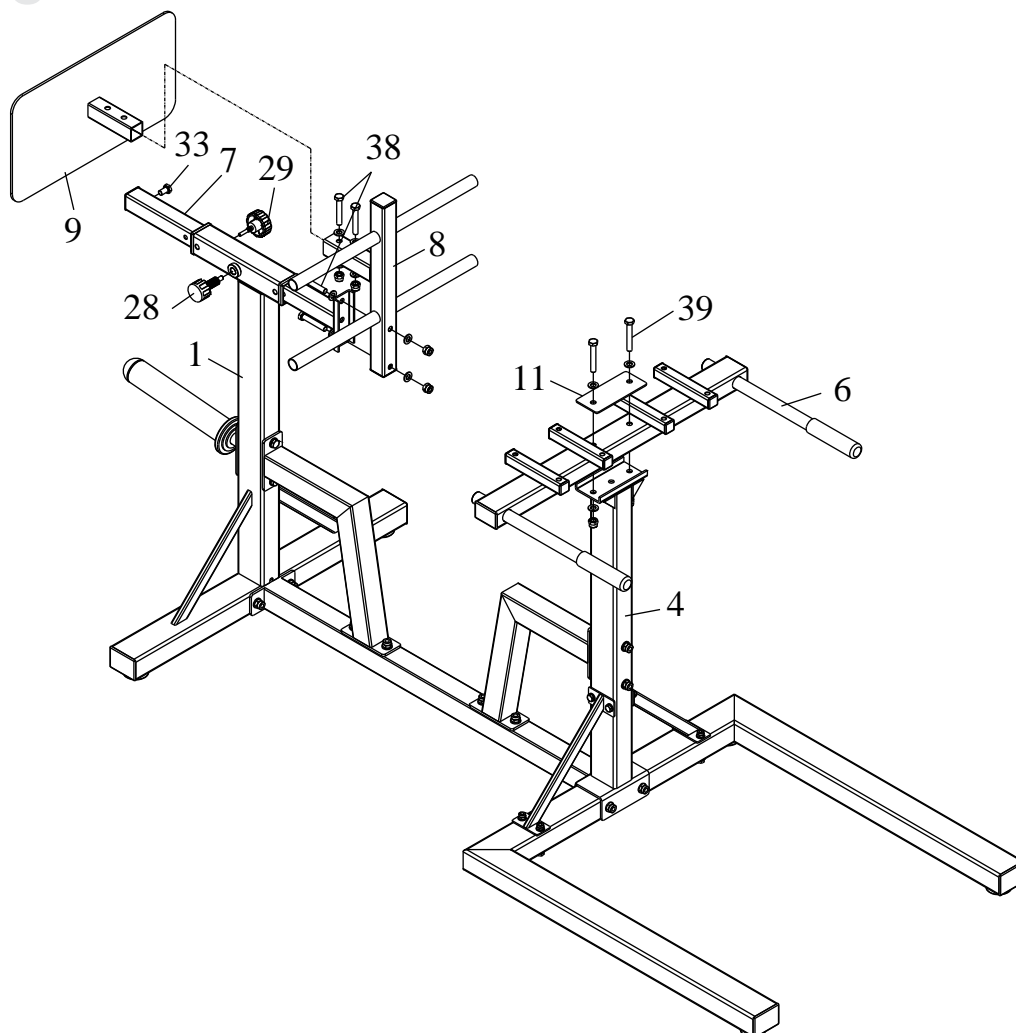
1. Attach two parts 26 to part 1 with two parts 31. Attach part 19 to part 1.
2. Attach part 1 to part 12 with two parts 41.
3. Attach part 10 to part 12 with two parts 40.
4. Attach part 10 and part 3 to part 1 with two parts 42.
5. Attach part 16 to part 3 with part 34.
6. Attach part 21 and part 25 to part 16.





## STEP03

NO  
DOUBTS

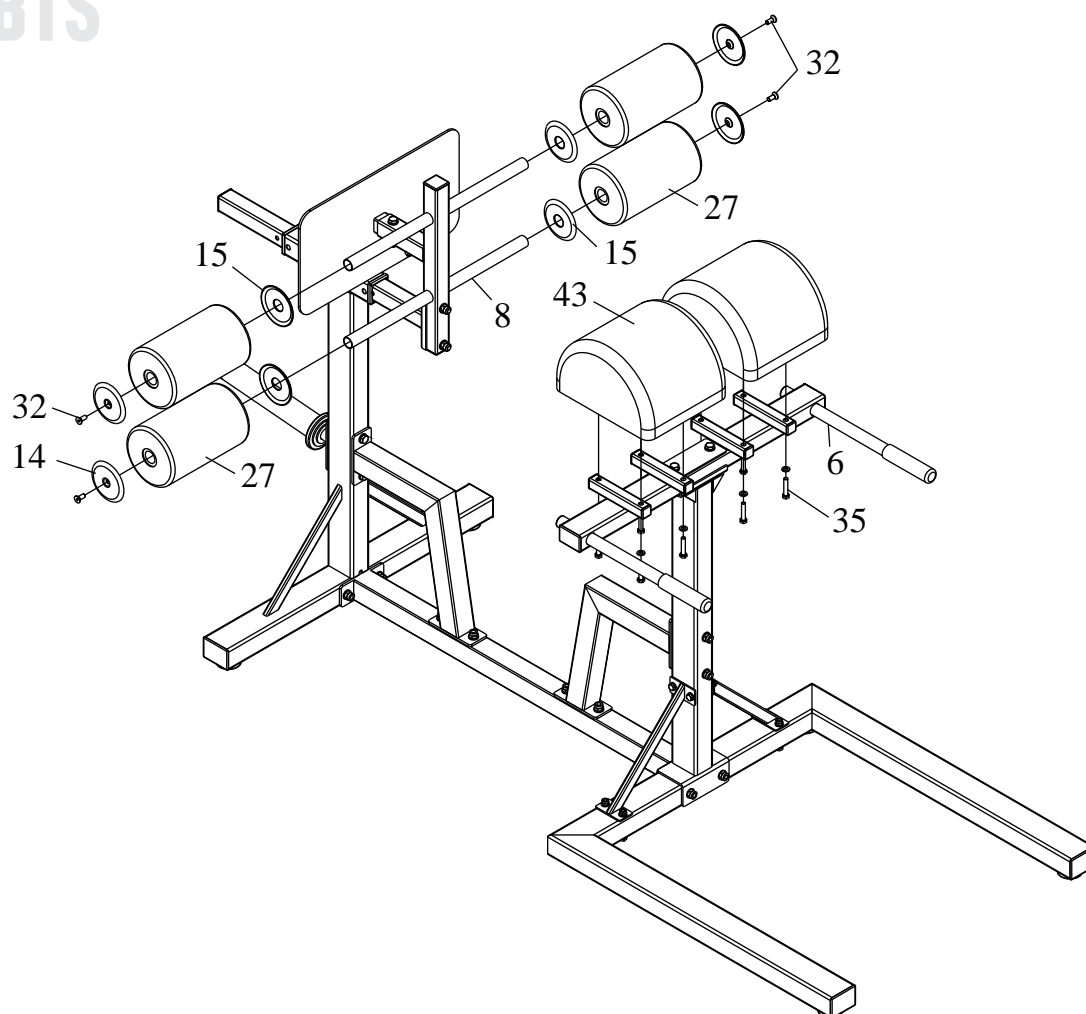


1. Attach part 11 and part 6 to part 4 with two parts 39.
2. Attach part 7 to part 1 with part 28 and part 29.
3. Attach part 8 to part 7 with two parts 38.
4. Attach part 9 to part 8 with two parts 38.
5. Attach part 33 to part 7.



## STEP04

NO  
DOUBTS



1. Attach two parts 43 to part 6 with eight parts 35.
2. Attach parts 14, parts 27 and parts 15 to part 8 and secure with parts 32.



**NO  
DOUBTS**

**www.zunfit.com**



**ITALY OFFICE**

Zun Srl  
via Mammarella snc  
66100 Chieti Scalo (CH), Italy  
Email: [info@zunfit.com](mailto:info@zunfit.com)  
Phone: +39 0871 551762

**CHINA OFFICE**

Zunone  
83# South Tongfu Road,  
Nantong Jiangsu China  
Email: [simon@zunone.cn](mailto:simon@zunone.cn)  
Phone: +0086-13901602295